

## CR-SS &amp; CR-X-SS

## Stainless Steel

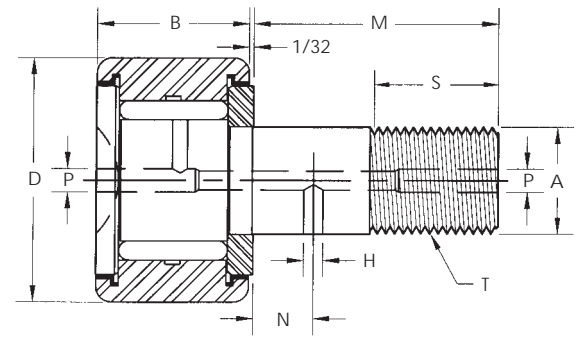
## Stud Type

## Screwdriver Slot

Stainless Steel  
Stud Type with  
Screwdriver Slot  
Sealed or Unsealed  
X = Sealed



STAINLESS STEEL



## General Information

The **SMITH CR-SS** and **YR-SS** Series of Cam Followers are manufactured from **440 Stainless Steel** for applications requiring increased corrosion resistance. Consult our Engineering Department for special configurations, sizes and materials to meet your needs.

## Dimensional Data (inches)

SMITH Bearing® Number		D Roller O.D. +.000 -.001	B Roller Width +.000 -.005	A Stud Dia. +.001 -.000	M Stud Length	S Eff. Thread Min.	T Thread U.N.F. Class 2A	N Oil Hole Location	H Oil Hole Dia.	P Lube Fitting Size	Min Boss Dia.	Recom. Bore +.0005 -.0005	Basic Dynamic Rating (lbs)
UNSEALED	SEALED												
CR-1/2-SS	CR-1/2-X-SS	.500	.375	.190	5/8	1/4	10-32	-	-	*1/8	19/64	.1900	475
CR-5/8-SS	CR-5/8-X-SS	.625	.4375	.250	3/4	5/16	1/4-28	-	-	*1/8	23/64	.2500	695
CR-3/4-SS	CR-3/4-X-SS	.750	.500	.375	7/8	3/8	3/8-24	1/4	3/32	3/16	1/2	.3750	1,245
CR-7/8-SS	CR-7/8-X-SS	.875	.500	.375	3/4	3/8	3/8-24	1/4	3/32	3/16	1/2	.3750	1,245
CR-1-SS	CR-1-X-SS	1.000	.625	.4375	1	1/2	7/16-20	1/4	3/32	3/16	5/8	.4375	1,560
CR-1 <sup>1</sup> / <sub>8</sub> -SS	CR-1 <sup>1</sup> / <sub>8</sub> -X-SS	1.125	.625	.4375	1	1/2	7/16-20	1/4	3/32	3/16	5/8	.4375	1,560
CR-1 <sup>1</sup> / <sub>4</sub> -SS	CR-1 <sup>1</sup> / <sub>4</sub> -X-SS	1.250	.750	.500	1 <sup>1</sup> / <sub>4</sub>	5/8	1/2-20	5/16	3/32	3/16	3/4	.5000	2,750
CR-1 <sup>3</sup> / <sub>8</sub> -SS	CR-1 <sup>3</sup> / <sub>8</sub> -X-SS	1.375	.750	.500	1 <sup>1</sup> / <sub>4</sub>	5/8	1/2-20	5/16	3/32	3/16	3/4	.5000	2,750
CR-1 <sup>1</sup> / <sub>2</sub> -SS	CR-1 <sup>1</sup> / <sub>2</sub> -X-SS	1.500	.875	.625	1 <sup>1</sup> / <sub>2</sub>	3/4	5/8-18	3/8	3/32	3/16	57/64	.6250	3,390
CR-1 <sup>5</sup> / <sub>8</sub> -SS	CR-1 <sup>5</sup> / <sub>8</sub> -X-SS	1.625	.875	.625	1 <sup>1</sup> / <sub>2</sub>	3/4	5/8-18	3/8	3/32	3/16	57/64	.6250	3,390
CR-1 <sup>3</sup> / <sub>4</sub> -SS	CR-1 <sup>3</sup> / <sub>4</sub> -X-SS	1.750	1.000	.750	1 <sup>3</sup> / <sub>4</sub>	7/8	3/4-16	7/16	3/32	3/16	1 <sup>3</sup> / <sub>64</sub>	.7500	4,470
CR-1 <sup>7</sup> / <sub>8</sub> -SS	CR-1 <sup>7</sup> / <sub>8</sub> -X-SS	1.875	1.000	.750	1 <sup>3</sup> / <sub>4</sub>	7/8	3/4-16	7/16	3/32	3/16	1 <sup>3</sup> / <sub>64</sub>	.7500	4,470
CR-2-SS	CR-2-X-SS	2.000	1.250	.875	2	1	7/8-14	1/2	5/32	3/16	1 <sup>13</sup> / <sub>64</sub>	.8750	5,660
CR-2 <sup>1</sup> / <sub>4</sub> -SS	CR-2 <sup>1</sup> / <sub>4</sub> -X-SS	2.250	1.250	.875	2	1	7/8-14	1/2	5/32	3/16	1 <sup>13</sup> / <sub>64</sub>	.8750	5,660
CR-2 <sup>1</sup> / <sub>2</sub> -SS	CR-2 <sup>1</sup> / <sub>2</sub> -X-SS	2.500	1.500	1.000	2 <sup>1</sup> / <sub>4</sub>	1 <sup>1</sup> / <sub>8</sub>	1-14	9/16	5/32	3/16	1 <sup>5</sup> / <sub>16</sub>	1.000	7,959
CR-2 <sup>3</sup> / <sub>4</sub> -SS	CR-2 <sup>3</sup> / <sub>4</sub> -X-SS	2.750	1.500	1.000	2 <sup>1</sup> / <sub>4</sub>	1 <sup>1</sup> / <sub>4</sub>	1-14	9/16	5/32	3/16	1 <sup>5</sup> / <sub>16</sub>	1.000	7,959
CR-3-SS	CR-3-X-SS	3.000	1.750	1.250	2 <sup>1</sup> / <sub>2</sub>	1 <sup>1</sup> / <sub>4</sub>	1 <sup>1</sup> / <sub>4</sub> -12	5/8	1/4	1/4	1 <sup>3</sup> / <sub>4</sub>	1.250	10,486

\* Relubricate through head end only.