

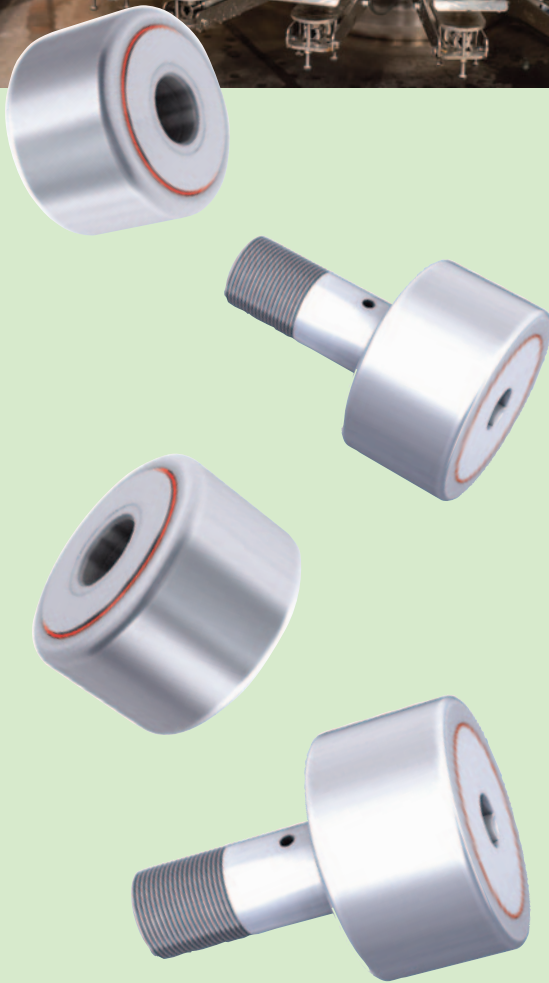
Stainless Steel Cam Followers & Track Rollers Manufactured from Stainless Steel

SMITH Bearing®

Manufactured
by

ABC

accurate
bushing
company



FEATURES:

- Corrosion Resistant Material
- High Temperature Resistance

BEARINGS BENEFITS:

- Material Handling
- Washdown Systems
- Corrosive Environments
- Outdoor Use
- Processing Plants
- Bottling Facilities

Added Options:

- Eccentric Bushing for positional alignment
- Crowned Outer Race to prevent unwanted edge loading
- Specialty Greases (i.e. Food Grade)
- SMITH-TRAX Taper Roller Bearings & Deep Groove – Ball Bearing also available in 440C or 316 Stainless

*Add suffix "SS" to standard part number