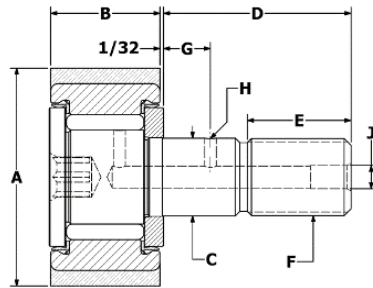


# URETHANE COATED

## INCH SIZES Cam Followers (Needle Rollers)



**CR-XB-U**  
**Stud Type**  
**Hex-Drive Socket**

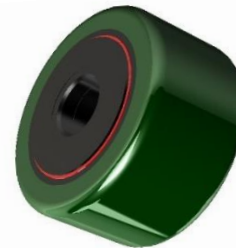
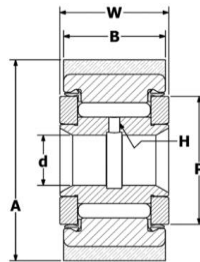
### Urethane Coated Stud Cam Followers

Manufactured with a urethane coated outer race. Ideal for applications where noise reduction and/or reduced wear are needed.

SMITH Bearing® Number	(A) Roller O.D.	(B) Roller Width	(C) Stud Dia.	(D) Stud Length	(E) Eff. Thread Min.	(F) Thread U.N.F. Class 2A	(G) Oil Hole Location	(J) Lube Fitting Size	(E) Min. Boss Dia.	Interchange
CR-3/4-XB-U	.750	.375	.190	.625	.250	10-32	N/A	N/A	19/64	CRT-24-SB
CR-1-XB-U	1.000	.500	.375	.875	.375	3/8-24	1/4	3/16	1/2	CRT-32-SB
CR-1-1/4-XB-U	1.250	.625	.4375	1.000	.500	7/16-20	1/4	3/16	5/8	CRT-40-SC
CR-1-1/2-XB-U	1.500	.750	.500	1.250	.625	1/2-20	5/16	3/16	3/4	CRT-48-SB
CR-1-3/4-XB-U	1.750	.875	.625	1.500	.750	5/8-18	3/8	3/16	57/64	CRT-56-SB
CR-2-XB-U	2.000	1.000	.750	1.750	.875	3/4-16	7/16	3/16	1-3/64	CRT-64-XB
CR-2-1/4-XB-U	2.250	1.250	.875	2.000	1.000	7/8-14	1/2	3/16	1-13/64	CRT-72-SB
CR-2-1/2-XB-U	2.500	1.250	.875	2.000	1.000	7/8-14	1/2	3/16	1-13/64	
CR-3-XB-U	3.000	1.500	1.000	2.250	1.125	1-14	9/16	3/16	1-5/16	

### YR-X-U

## Yoke Type



### Urethane Coated Yoke Followers

Manufactured with a urethane coated outer race. Ideal for applications where noise reduction and/or reduced wear are needed.

SMITH Bearing® Number	(A) Roller O.D.	(d) Bore I.D.	(B) Roller Width.	(W) Overall Roller Width	(P) Min Clamping Dia	(H) Oil Hole Dia	Interchange
YR-1-X-U	1.000	.250	.500	.5625	1/2	3/32	YRT-32-S
YR-1-1/4-X-U	1.250	.3125	.625	.6875	5/8	3/32	YRT-40-S
YR-1-1/2-X-U	1.500	.375	.750	.8125	5/9	3/32	YRT-48-S
YR-1-3/4-X-U	1.750	.4375	.875	.9375	57/64	3/32	YRT-56-S
YR-2-X-U	2.000	.500	1.000	1.0625	1-3/64	3/32	YRT-64-S
YR-2-1/4-X-U	2.250	.625	1.250	1.3125	1-13/64	3/32	YRT-72-S
YR-2-1/2-X-U	2.500	.625	1.250	1.3125	1-13/64	3/32	
YR-3-X-U	3.000	.750	1.500	1.5625	1-5/16	3/32	

800-932-0076